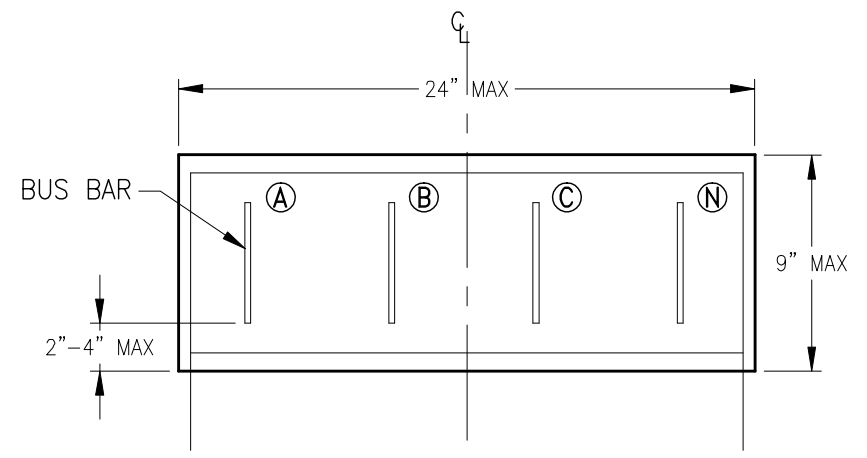
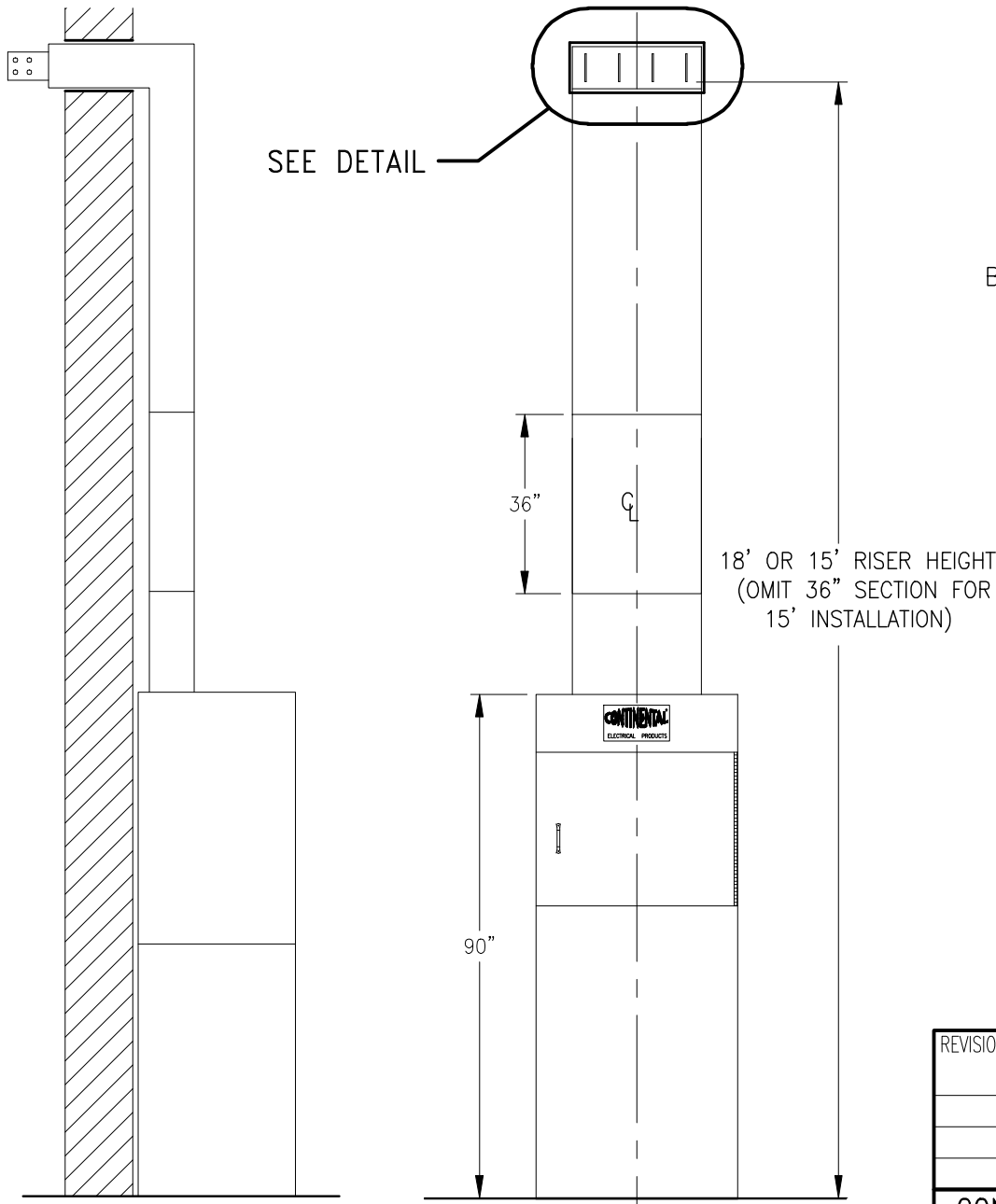


CONTINENTAL TYPE 1 DEADFRONT SWITCHBOARD WITH UTILITY SERVICE RISER



CONTINENTAL SERVICE HEAD DETAIL

15' AND 18' RISER HEIGHT DECo SPECIFICATION PER SIM-ESIG 4-4-5 IS MEASURED FROM GRADE TO THE BOTTOM EDGE OF BUSBAR MINIMUM.

NOTE:

- U.L. LISTED 857 BUSWAY FILE #E101620
- U.L. LISTED 891 SWITCHBOARD FILE #E200401

www.ContinentalElectricalProducts.com

REVISIONS	DRAWN VLH	JOB NAME	CONTRACTOR
	CHECKED PJC	LOCATION	DISTRIBUTOR
	DATE 11.6.13		
CONTINENTAL ELECTRICAL PRODUCTS MANUFACTURED BY COTSON FABRICATING INC. TROY, MICHIGAN USA 248.589.2758		FILE	CATALOG #